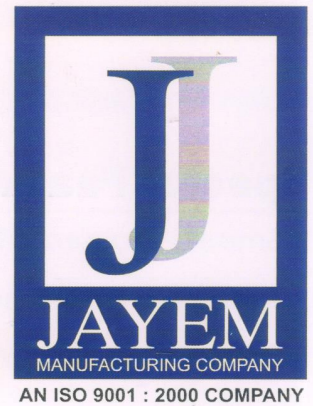


BUILDING HOIST FOR PASSENGER'S AND MATERIALS (OUTDOOR ELEVATORS)



Rack & Pinion Type Material Cum Passenger Hoist

SC type construction hoists, commonly known as outdoor elevators, provide safe and speedy vertical transport of personnel and materials by using cages consisting of gear driving mechanisms and safety devices. A suspension cage carrying personnel or materials moves along a guide bracket braced up on the foundation and attached to the building and uses a rack to ascend, descend or stop at the desired floor.

This product uses the latest design drawings and transforms the human environmental situation under the updates model which emphasizes cargo carriage. It has fundamentally improved, operators and passengers comfort, safety, reliability and aesthetics, reflecting "people-based" user friendly features.



JAYEM MANUFACTURING COMPANY (P) Ltd.

AN ISO 9001 : 2000 COMPANY

Special Features:

- Smooth Movement
- Rack and pinion gear mechanism.
- Safe and speedy vertical transport.
- Suspension cage carries persons and material.
- Highly reliable, efficient and energy saving.
- Operation central system inside cabin.
- Machine does not start till entry and exit gates are closed.
- Equipped with most optimal safety devices to prevent cage falling accidents.

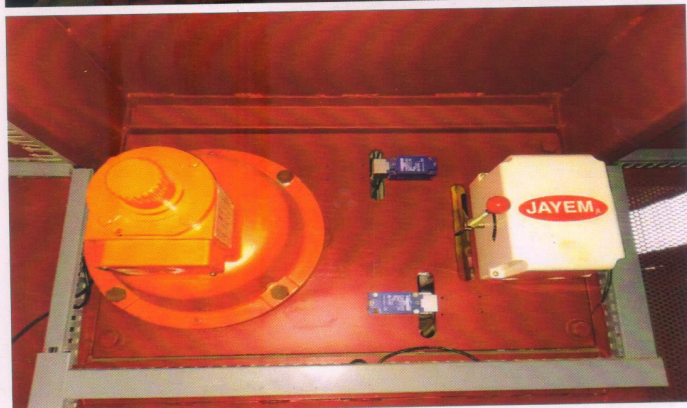
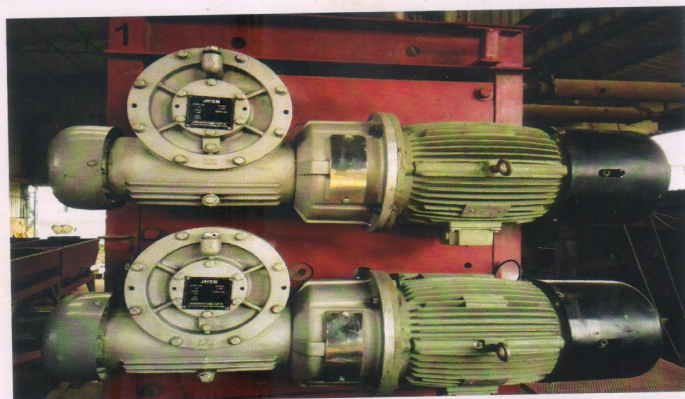


Table : Single Cage Standard Speed

Model	Speed m/min	Capacity (kgs)	Motor (kw)	Cabin Size (LxWxH in M.)
SC-100	36	1000	1 x 11 kw	2 x 1.2 x 2.2
SC-150	36	1500	2 x 9.2 kw	2.5 x 1.2 x 2.2
SC-200	36	2000	3 x 9.2 kw	3 x 1.2 x 2.2
SC-300	36	3000	3 x 11 kw	3.5 x 1.2 x 2.2

Table : Twin Cage Standard Speed

Model	Speed m/min	Capacity (kgs)	Motor (kw)	Cabin Size (LxWxH in M.)
SC-100	36	2 x 1000	2 x 1 x 11 kw	2 x 1.2 x 2.2
SC-150	36	2 x 1500	2 x 2 x 9.2 kw	2.5 x 1.2 x 2.2
SC-200	36	2 x 2000	2 x 3 x 9.2 kw	3 x 1.2 x 2.2
SC-300	36	2 x 3000	2 x 3 x 11 kw	3.5 x 1.2 x 2.2

Note

■ Due to continues improvement in design, the above specifications are subject to change.

**JAYEM
MANUFACTURING
COMPANY (P) Ltd.**
AN ISO 9001 : 2000 COMPANY

ADDRESS

C-99, Sector-4, Noida-201 301
(UP) INDIA
Ph.: 0120-2520242, 2530163
E-mail: jayempl.acd@gmail.com

B2/10, Site-B, Surajpur,
Industrial Area, Greater Noida (UP) INDIA
Mob.: +91-9810388900
Visit us: www.jayem.in